

Typeit in One

Version 4.0

User Manual

Table of Contents

| | |
|--|----|
| Main button window | 2 |
| Title bar menu | 3 |
| Group menu | 4 |
| Button menu | 4 |
| Button edit | 5 |
| Button color select | 6 |
| Group edit | 8 |
| Shortcuts | 10 |
| Settings | 11 |
| Examples | 13 |
| License | 14 |
| Search | 15 |
| Password Generator | 16 |
| Special Functions | 17 |
| Variables | 22 |
| Date and Time formatting Options | 23 |
| Command Line | 24 |

Thank you for using Typeitin One from wavget.com.

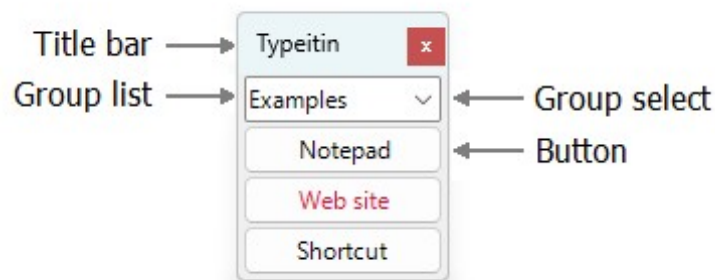
Typeitin One was created to increase your productivity. It is not limited to your web browser; it will type for you in all applications. Simply click where you want Typeitin One to type, and directly after that on the button you want to activate.

You can also assign a shortcut key like Control-Alt-S or a shortcut phrase like [scp](#) to activate a button.

The simple but powerful user interface is easy to use with a short learning curve; you'll be creating your own buttons in minutes.

Typeitin One is free to use for 14 days. You can purchase a license by clicking the Buy now button in the license window.

Main button window



Title bar

- Right click to show the title bar menu.
- Double click to “roll up” or “unroll” the button window.
- Click red x to hide the button window.

Group list

- Right click to show the group menu.
- Click to select a group from the list.

Select Group



- Right click to cycle through groups. Hold down the Shift key to cycle in reverse.
- Click to select a group from the list.

Button

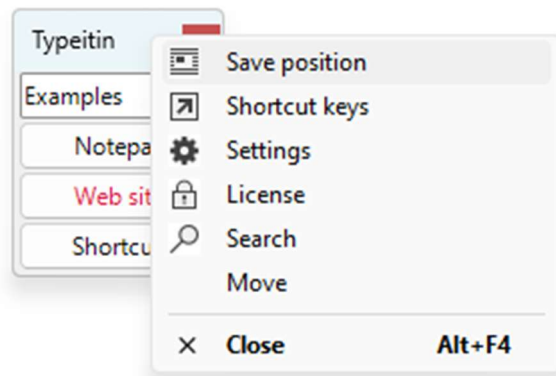
- Right click to show the button menu.
- Click to activate a button. Click it again or press Escape to stop the button while it is typing.

To show the button window after it has been hidden, you can click on the Typeitin One icon in the task bar tray.



If you do not see the Typeitin One icon  you may first have to click on the Show hidden icons button . To always show the icon, right click on the taskbar and select Taskbar settings from the pop-up menu. Then click on Select which icons appear on the taskbar, and slide the switch next to TypeitinOne to On.

Title bar menu



Right click on the title bar to show the title bar menu.

- **Save position**

Save the button window position for the selected group. When enabled in the group settings, the button window will automatically move to this position when this group is selected.

- **Shortcut keys**

Open the Shortcut keys window.

- **Settings**

Open the Settings window.

- **License**

Open the License window.

- **Search**

Open the button search window.

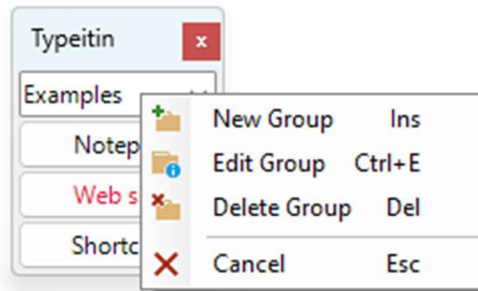
- **Move**

Move the button window.

- **Close**

Close (hide) the button window. Click on the Typeitin One icon in the task bar tray (by the clock) to show the button window again.

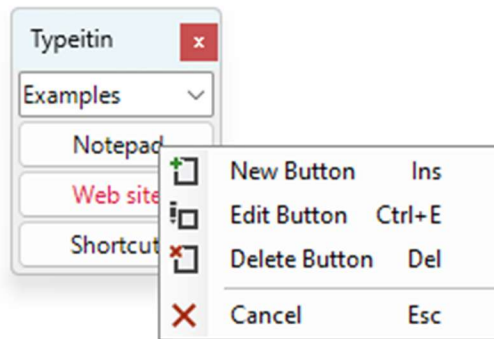
Group menu



Right click on the group list to show the group menu.

- **New group**
Create a new group and open the Group window.
- **Edit group**
Open the Group window.
- **Delete group**
Delete the currently selected group after a confirmation dialog.
- **Cancel**
Close the group menu.

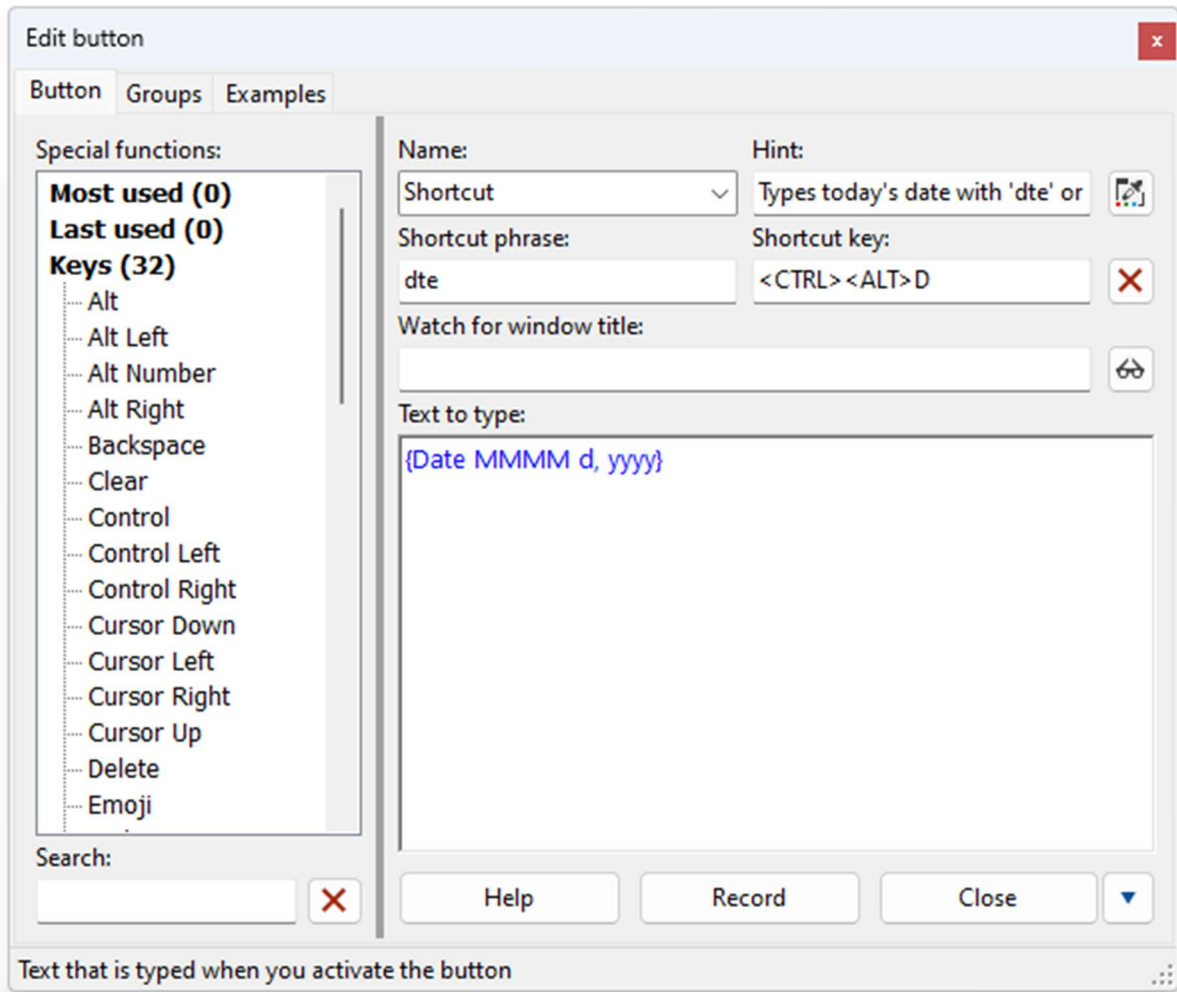
Button menu



Right click on a button to show the button menu.

- **New button**
Create a new button and open the button edit window.
- **Edit button**
Open the button edit window.
- **Delete button**
Delete the button after a confirmation dialog.
- **Cancel**
Close the button menu.

Button edit



The edit button page allows you to modify the settings for the selected button.

- **Special functions**

Click on an item to see a short description in the status bar. Double click to insert the item into the text the button will type. Double click on a section header to show/hide the section.

- **Search**

Search the special functions list, use the X button to clear the search.

- **Name**

The text that will appear on the button in the button window.

- **Hint**

A hint that will appear when the mouse cursor is over the button.

- **Button color picker**

Select the button colors. A color picker dialog will show.

- **Shortcut phrase**

A shortcut you can type to activate the button. In this example, when you type *dte* in a window, a small notification will show at the top of that window. You can then press the Control key to activate the button. Typeitin One will erase the *dte* and replace it with the contents of the button.

- **Shortcut key**

A shortcut key combination to activate the button. In this example, the button will be activated when you press Control Alt D. To enter the shortcut key combination, click on the shortcut key box and press the key combination. You can also modify this setting on the Shortcut keys page.

- **Clear shortcut key**

Clear button's shortcut key.

- **Watch for window title**

Watch for a window title to activate the button. When Typeitin One detects a window title that matches a button, a small notification will show at the top of that window. You can then press the Control key to activate the button. To configure this option, make sure the window with the required window title is open and click the Watch button. Click Yes in the confirmation dialog and directly after that click on the title bar of the window with the correct window title.

- **Text to type**

Enter the text the button will type here.

- **Help**

Show this user manual

- **Record**

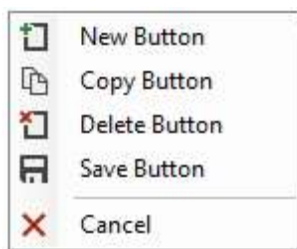
Record typing in another window. You can use this to create a button by allowing Typeitin One to record your keyboard actions during a specific function.

- **Close**

Save any changes to the button information and close the edit window. Click the red x to close the edit window without saving.

- **Action**

Opens the Button Actions menu.



- **New Button**

Create a new button in the current group.

- **Copy Button**

Copy the button name, hint, and text and create a new button in the current group.

- **Delete Button**

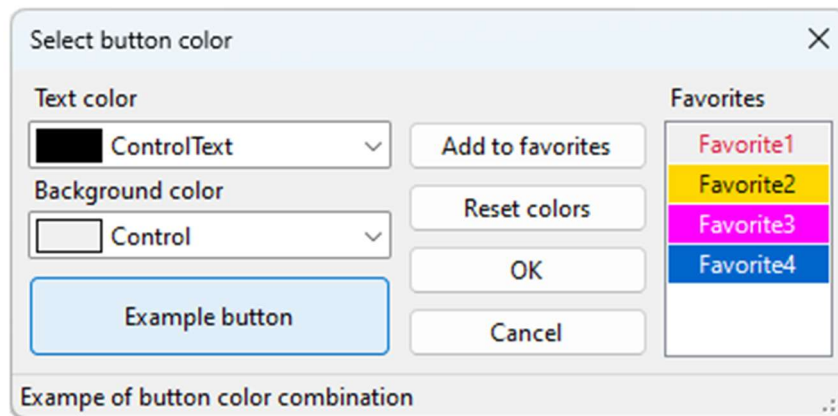
Delete the current button.

- **Save Button**

Save any changes to the current button.

Note: Moving your mouse over a control will display a helpful hint in the status bar of the Edit Button window.

Button color select



This dialog allows you to select the foreground (text) and background color for a button.

- **Text color**

Select the button text color.

- **Background color**

Select the button background color

- **Example button**

Example of what the button will look like with the selected foreground and background colors.

- **Add to favorites**

Add the currently selected color combination to the favorites list.

- **Reset colors**

Reset the button colors to the Windows default colors.

- **OK**

Save the current color settings and close the dialog.

- **Cancel**

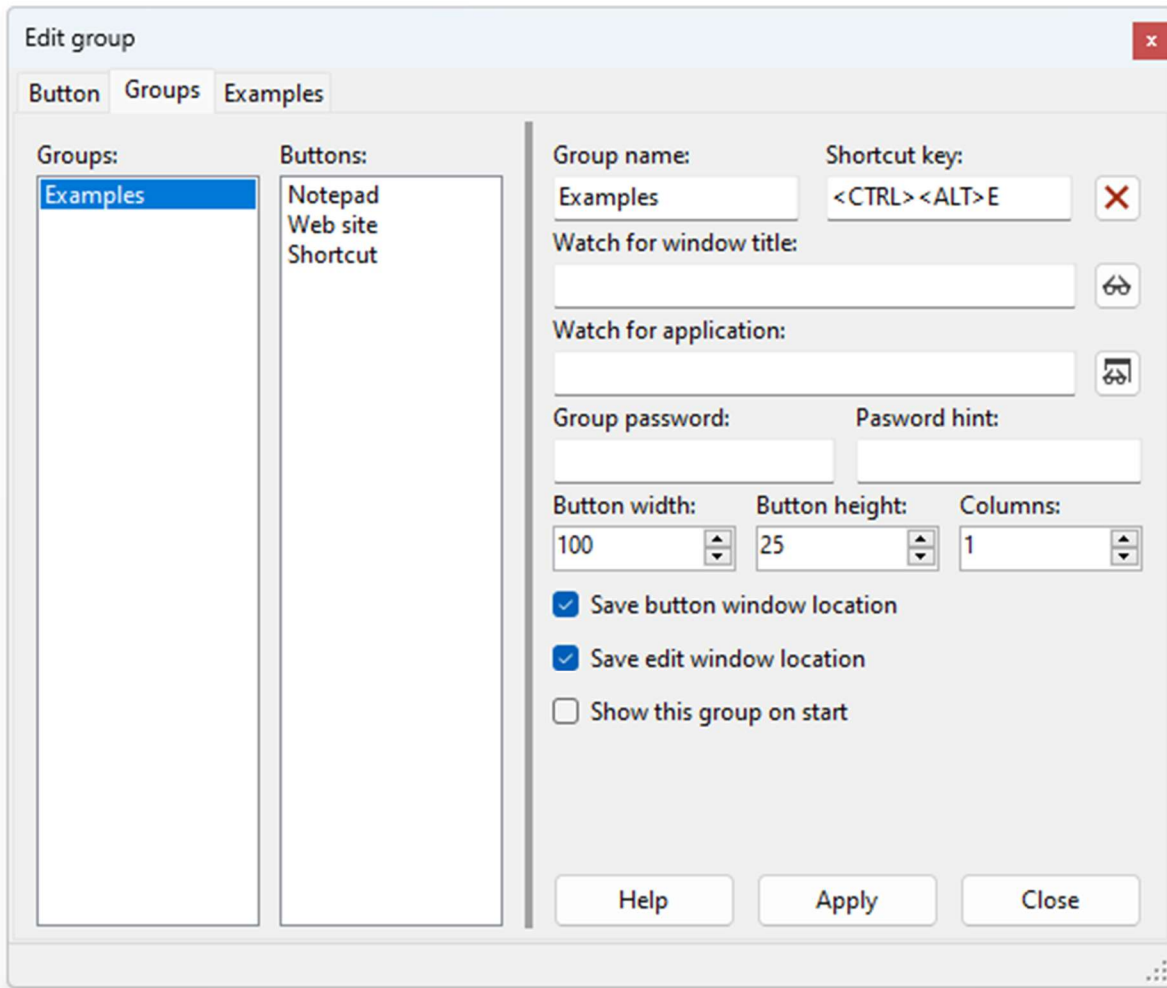
Discard the current color settings and close the dialog.

- **Favorites**

List of favorite color combinations. Double click to apply selected favorite. Del key to delete selected favorite.

Note: Moving your mouse over a control will display a helpful hint in the status bar of the Button Color window.

Group edit



The edit group page allows you to modify the settings for the selected group.

- **Groups**

List of groups. Click to select a group. Drag with the left mouse button to rearrange. Right click for group menu.

| | | |
|--|--------------|--------|
| | New Group | Ins |
| | Delete Group | Del |
| | Export Group | Ctrl+E |
| | Import Group | Ctrl+I |
| | Sort Groups | Ctrl+S |
| | Close | Esc |

- **New group**

Create a new group.

- **Delete Group**

Delete selected group.

- **Export Group**

Export select group to file to share with other Typeitin One users.

- **Import Group**





Import group from file.

- **Sort Groups**

Sort groups alphabetically.

- **Buttons**

List of buttons in selected group. Double click to edit button. Drag and drop with *left* mouse button to move button within same group or to different group. Drag and drop with the *right* mouse button to copy button to same or different group. Right click for button menu.

| | | |
|---|---------------|--------|
|  | New Button | Ins |
|  | Delete Button | Del |
|  | Sort Buttons | Ctrl+S |
|  | Close | Esc |

- **New Button**
Create a new button in the selected group.
- **Delete Button**
Delete the selected button.
- **Sort Buttons**
Sort buttons alphabetically.

- **Group name**

The name that will appear in the button window group list.

- **Shortcut key**

A shortcut key combination to switch to the group. To enter the shortcut key combination, click on the shortcut key box and press the key combination. You can also modify this setting on the Shortcut keys page.

- **Clear shortcut key**

Clear the group's shortcut key.

- **Watch for window title**

Watch for a window title to switch to the group. When Typeitin One detects a window title that matches a group, it will automatically switch to the group. To configure this option, make sure the window with the required window title is open and click the Watch button. Click Yes in the confirmation dialog and directly after that click on the title bar of the window with the correct window title.

- **Watch for application**

Watch for an application to switch to the group. When Typeitin One detects a program that matches a group, it will automatically switch to the group. To configure this option, make sure the program is running and click the Application watch button. Click Yes in the confirmation dialog and directly after that click on the title bar of the program.

- **Group password**

If the password is set you will have to enter the password before you can switch to the group.

- **Password hint**

A hint that will be displayed when entering the group password.

- **Button width**

The width of the buttons in the button window in pixels.

- **Button height**

The height of the buttons in the button window in pixels.

- **Columns**

The number of columns of buttons in the button window.

- **Save button window location**

Automatically save the location of the button window associated with this group.

- **Save edit window location**

Automatically save the location of the edit window associated with this group.

- **Show this group on Start**

Select this group when Typeitin One first starts.

- **Help**

Show this user manual

- **Apply**

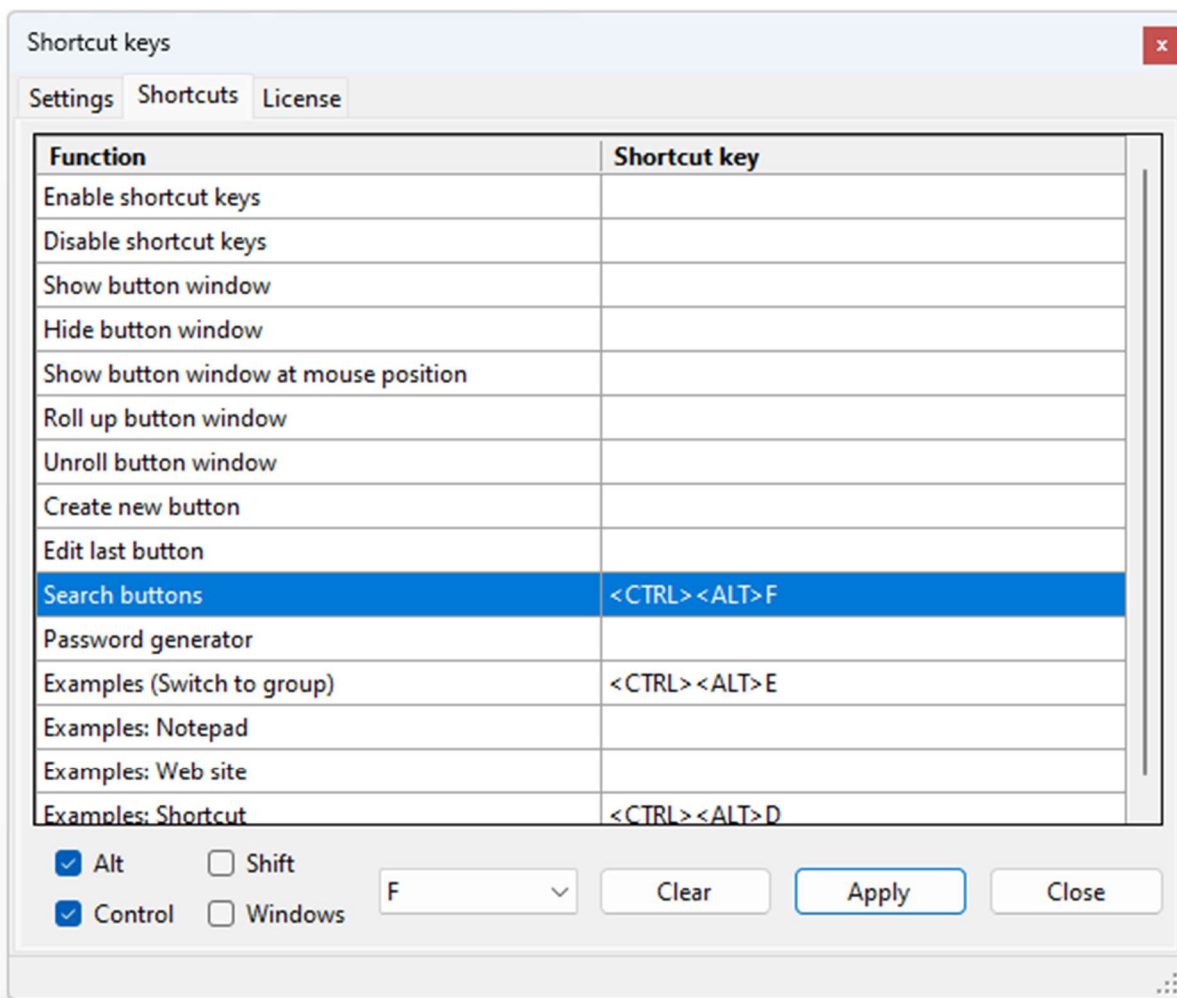
Apply any changes you may have made to the group settings. Useful when changing button size or number of columns.

- **Close**

Save any changes to the group settings and close the edit window. Click the red x to close the edit window without saving.

Note: Moving your mouse over a control will display a helpful hint in the status bar of the Edit Group window.

Shortcuts



The shortcuts page allows you to modify shortcut keys for functions, groups, and buttons.

- **Function**

List of functions that can have a shortcut key. The first 10 are special functions like Open search window, which has the Control Alt F shortcut key assigned in this example. Next will be a list of each group and each button. You can assign a shortcut key to switch to a group or to activate a button.

Select a function to modify the shortcut key.

- **Shortcut key**

The shortcut key assigned to the specific function.

- **Alt, Control, Shift, and Windows**

Check the box to include a key in the shortcut.

- **Key to include in the shortcut**

Possible options are A through Z, 0, through 9, and F1 through F12.

- **Clear**

Clear the selected shortcut key

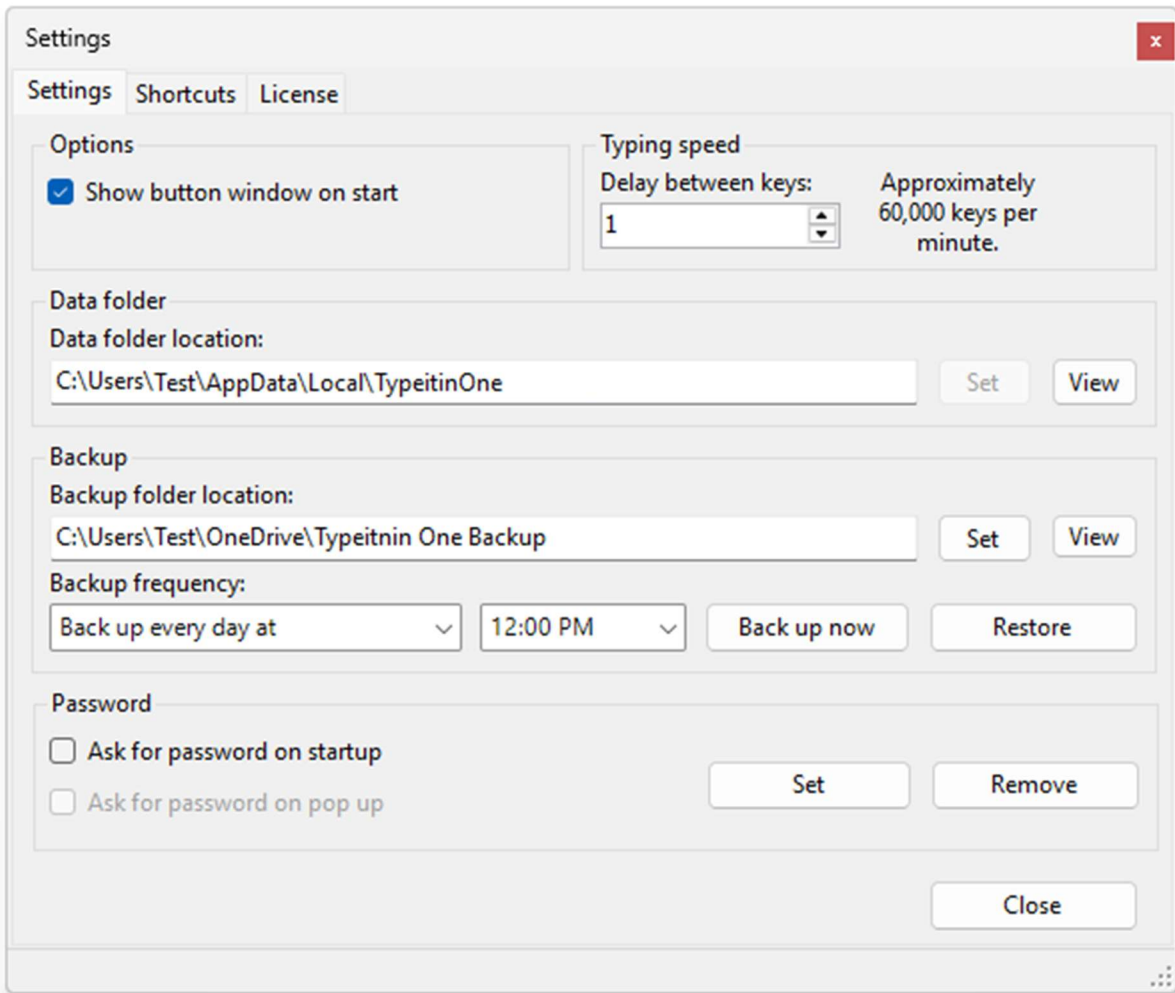
- **Apply**

Apply the selected settings to the selected function. If the shortcut key combination is not in use by Typeit in One or any other program it will be assigned to the function.

- **Close**

Save and close the shortcut key window.

Settings



The settings page allows you to configure Typeitin One options

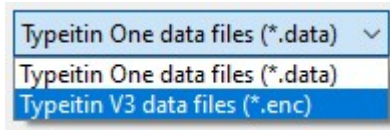
- **Show button window on start**
Check to show button window when you start Typeitin One.
- **Typing speed**
Delay in milliseconds between keys.
- **Data folder location**
Folder where Typeitin One button information file is stored.
- **View**
Open data folder location in Windows Explorer.
- **Backup folder location**
Folder where backup of Typeitin One button information files are stored.
- **Set**
Select the folder where backup files are stored.
- **View**
Open backup folder location in Windows Explorer.
- **Backup frequency**
Select daily, weekly, or monthly automatic backup frequency, or disable automatic backup.
- **Backup option**
Select the time of day, day of the week, or day of the month for the automatic backup.

- **Backup now**

Manual backup. Allows you to select a location for this backup only.

- **Restore**

Allows you to restore the buttons from a Typeitin One backup or from a Typeitin V3.x datafile.



To restore from a Typeitin Professional, Network, or Enterprise version 3.x data file, select the *.enc option in the open file dialog.

- **Ask for password on startup**

Set a password that will be used to encrypt the data file. This password is not stored in Typeitin, you will have to enter it every time Typeitin starts.

- **Ask for password on pop up.**

Available when data file password is set. Typeitin will ask for password every time the button window pops up after being minimized.

- **Set**

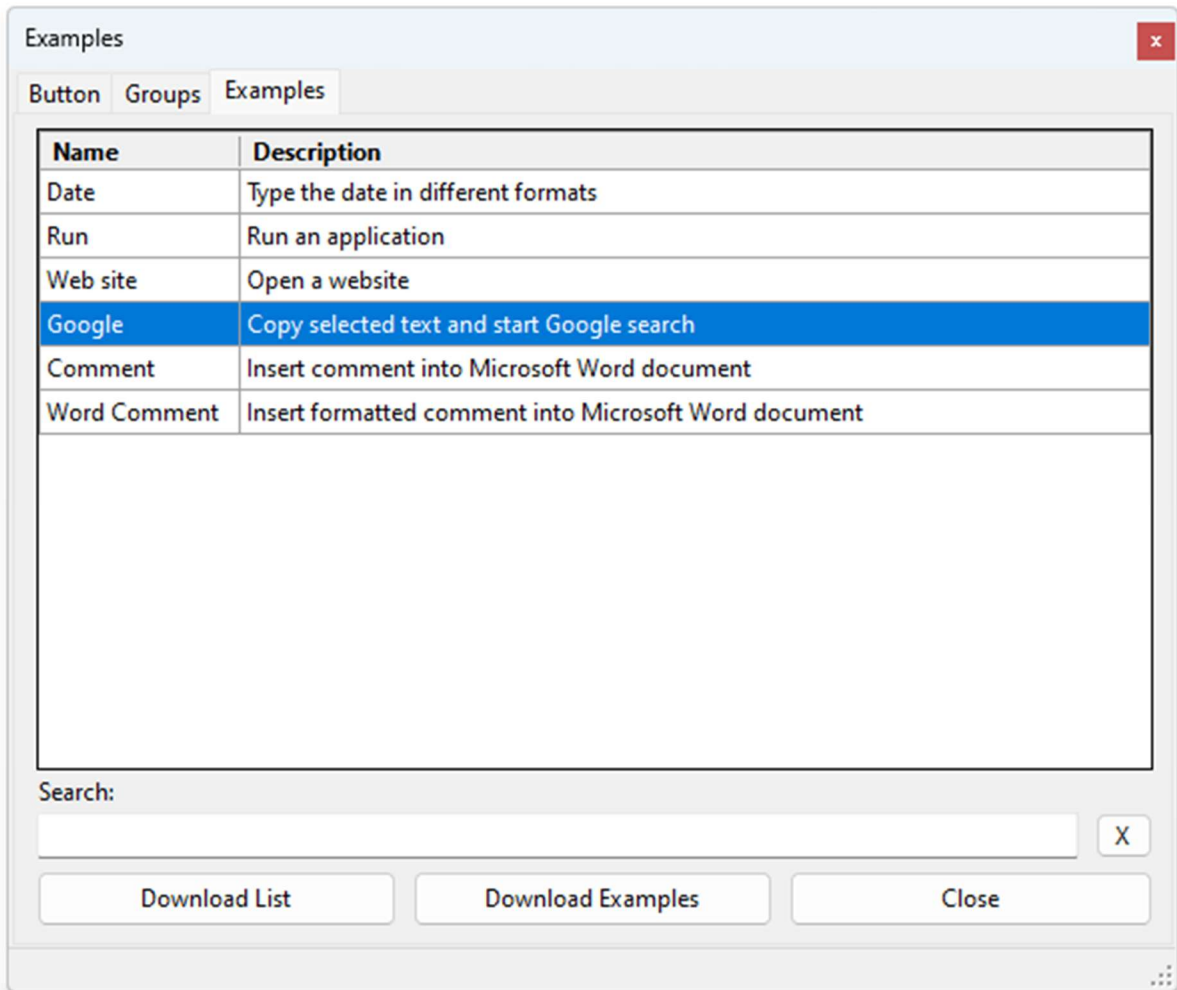
Set or change the data file encryption password.

- **Remove**

Remove the data file encryption password.

Note: Typeitin employs state-of-the-art 256-bit AES encryption. Please note that if you forget the password, you will not be able to access the data file with the button information.

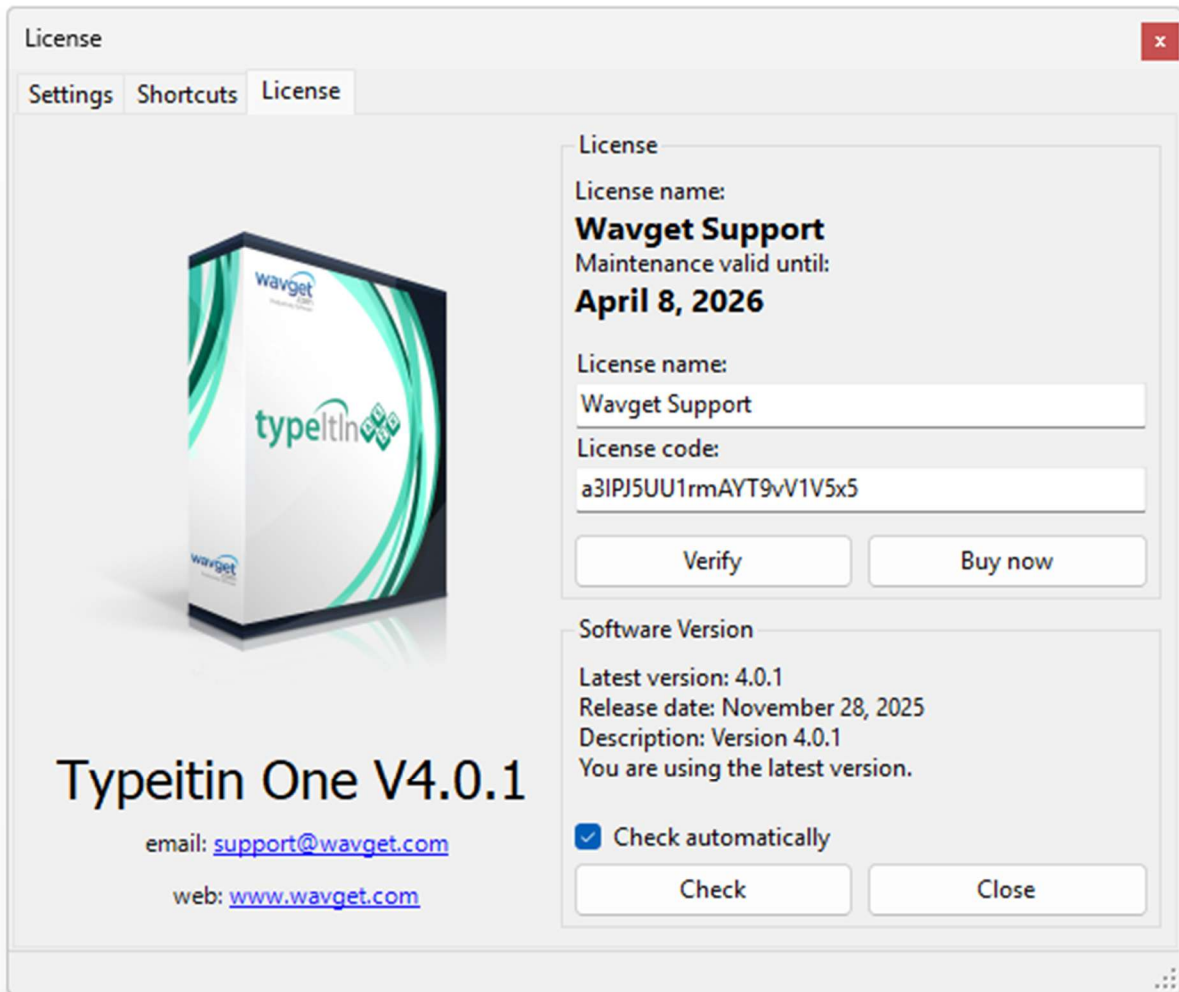
Examples



The examples page allows you to download example buttons from the wavget.com server.

- **Name**
Name of the example button
- **Description**
Description of the example button
- **Search**
Search the example buttons. Use the X button to clear the search.
- **Download list**
Download a list of available example buttons from the wavget.com server.
- **Download examples**
Download the selected example buttons from the wavget.com server and add the buttons to the Examples group.
- **Close**
Close the examples window.

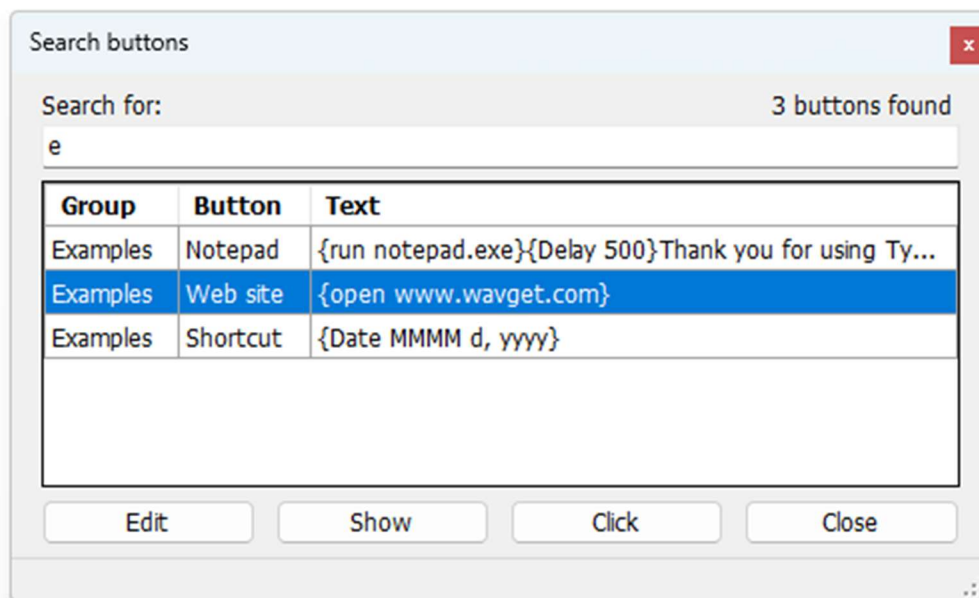
If you have a suggestion for an example button, please email support@wavget.com.



The license page displays program version and subscription status information.

- **License name**
Enter your license name here, exactly as in the license email. Identical capitalization is important.
- **License code**
Enter your license code here, exactly as in the license email. Copy and paste from the email to be sure.
- **Verify**
After you enter your name and code, click the Verify button.
- **Buy now**
Purchase a new license or maintenance for an existing license.
- **Check**
Check the wavget.com server for the latest version of Typeitin One. Double click on the latest version information to download it.
- **Auto check**
Automatically check the wavget.com server for the latest version of Typeitin One once per week.
- **Close**
Close the license window.

Search



Search your buttons. Right click on the button window title bar and select Search from the menu to access this window. You can also assign a shortcut key like <CTRL><ALT>F to open this window.

- **Search for**

Type the text you want to search for here. The Search results will automatically update as you type.

- **Search results**

A list of buttons that match the search text. Click one of the results to select it.

- **Edit**

Open the selected button in the button edit window.

- **Show**

Flash the selected button to show its location. Type it in One will switch to the button's group if required.

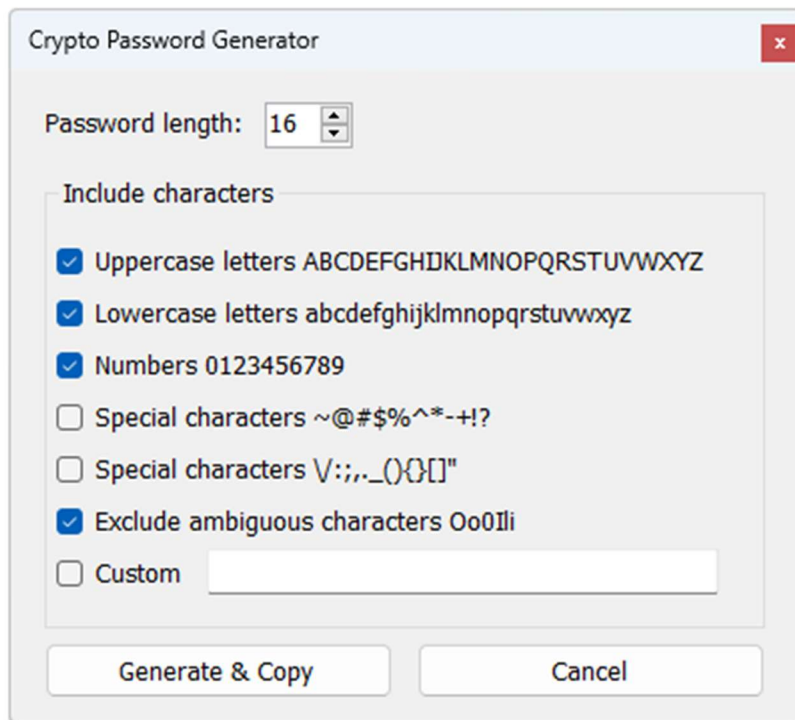
- **Click**

Activate the selected button and type its contents.

- **Close**

Close the search window.

Password Generator



The image shows a dialog box titled "Crypto Password Generator" with a close button (X) in the top right corner. Inside the dialog, there is a "Password length:" label followed by a spinner box containing the number "16". Below this is a section titled "Include characters" which contains several options, each with a checkbox and a list of characters:

- Uppercase letters ABCDEFGHIJKLMNOPQRSTUVWXYZ
- Lowercase letters abcdefghijklmnopqrstuvwxyz
- Numbers 0123456789
- Special characters ~@#\$\$%^*~+!?
- Special characters \/:;.,_(){}[]"
- Exclude ambiguous characters Oo0Ili
- Custom

At the bottom of the dialog, there are two buttons: "Generate & Copy" and "Cancel".

Double click on the Password function in the Button Edit window to open the Password generator window.

Select the password length and the characters you want to include in the password. The custom option allows you to provide your own character set.

- **Password length**

The number of characters in the generated password.

- **Include characters**

Check the box for the characters you want to be included in the password. The custom option allows you to enter you own set of characters.

- **Generate & Copy**

Generate the password, insert it into the button text, and copy it to the clipboard.

- **Cancel**

Close the password generator window.

Special Functions

Comment

Add a comment to the button text that will not be typed.

Example

`name@gmail.com{tab}e0SprVDT1u8duVNw{Enter}{*** password last changed 12/15/2024 ***}`

Date

Type the date.

Example

`{date M/d/yyyy}` types 8/15/2021.

`{date M/d/yyyy,30}` adds 30 days to today's date and types 9/14/2021.

`{Date MMMM d}`, `{Date yyyy}` types August 15, 2021.

See Date and Time formatting options for more information.

Delay

Add a delay before continuing.

Example

`{Delay 250}` adds a 250 milliseconds delay.

Emoji

Add an emoji to the text the button will type. Opens the Windows Emoji keyboard.

Group

Switch to a Typeitin group.

Example

`{Group Examples}` switches to the Examples group.

Password

Generate a password. Opens the Password Generator dialog window.

Open

Open a file in its default application.

Example

`{Open c:\temp\example.txt}` opens the example.txt file in the program associated with text files, usually Notepad.

`{Open www.wavget.com}` open the wavget.com website in the default browser.

Pause

Pause typing

Example

`{Pause 5}` pauses typing for 5 seconds. Countdown shows in Typeitin title bar.

Run

Run an executable file with an optional parameter.

Example

`{Run notepad.exe}` starts notepad.

`{Run excel.exe, c:\temp\example.csv}` starts Excel and opens the example.csv file.

Admin

Run an executable file in Administrator mode with optional parameters.

Example

`{Admin cmd.exe}` start command prompt in Administrator mode.

List

Display a list of items of which you can make a selection.

Examples

{List One,Two,Three} allows the selection of One, Two, or Three and types the section.

{List Title:Select a number,One,Two,Three} adds the "Select a number" title to the selection window.

{List Title:Select a number,Pos:Screen,One,Two,Three} positions the selection window to the center of the screen. Other positions options are Pos:Window for the center of the window of the active application, and Pos:100|200 for an absolute x,y position on the screen. The default location for the list window is the mouse cursor.

Speed

Set typing speed for this button.

Example

{Speed 25} sets the typing speed to 25 milliseconds between keys.

Time

Type the time

Example

{Time HH:mm} types the time like 16:59.

See Date and Time formatting options for more information.

Hide or Show Typeitin

Hide or show the Typeitin button window.

Example

{Hide} hides the Typeitin button window.

{Show} shows the Typeitin button window.

Paste File

Load a text file and paste it into the active window.

Example

{PasteFile c:\temp\example.txt} loads the example.txt file and pastes it into the active window.

Paste Image

Load a BMP, JPG, GIF, PNG, or TIFF file and paste it into the active window.

Example

{PastePic c:\temp\example.png} loads the example.png file and pastes it into the active window.

Paste Text

Paste text into the active window.

Example

{Paste This text will be pasted,{Enter}Not typed.} Pastes the text, Enter key is supported.

Roll Up

Roll up Typeitin button window to show only the title bar.

Example

{RollUp} rolls up the Typeitin button window. Use {Show} to restore the button window.

File Type

Load a text file and type it into the active window.

Example

{FileType c:\temp\example.txt} loads the example.txt file and types it into the active window.

Window Activate

Activate a window with a specific title.

Example

`{Activate Untitled - Notepad}` activates a newly opened Notepad window.

Window Maximize

Maximize a window with a specific title.

Example

`{WinMax Untitled - Notepad}` maximizes a newly opened Notepad window.

Window Minimize

Minimize a window with a specific title.

Example

`{WinMin Untitled - Notepad}` minimizes a newly opened Notepad window.

Window Position

Move a window with a specific title to a x,y location on screen.

Example

`{WinPos 168,1069,Untitled - Notepad}` moves the Notepad window to 168,1069.

Window Size

Resize a window with a specific title.

Example

`{WinSize 1300,950,Untitled - Notepad}` resizes the Notepad window to 1300 wide, 950 tall.

Browser Back

Press the browser back button.

Example

`{BrowserBack}` navigates the browser to the previous page.

Browser Forward

Press the browser forward button.

Example

`{BrowserForward}` navigates the browser to the next page.

Browser Favorites

Press the browser favorites button.

Example

`{BrowserFavs}` opens the browser favorite bookmarks.

Browser Home

Press the browser home button.

Example

`{BrowserHome}` navigates the browser to the home page.

Browser Refresh

Press the browser refresh button.

Example

`{BrowserRefresh}` refreshed the current page.

Browser Search

Press the browser search button.

Example

{BrowserSearch} opens the browser search dialog.

Browser Stop

Press the browser stop button.

Example

{BrowserStop} stops the browser from loading the page.

Media Next

Press media next button.

Example

{MediaNext} select next track.

Media Pause

Press media pause button

Example

{MediaPause} pauses media playback.

Media Play

Press media play button.

Example

{Play} start media playback.

Media Previous

Press media previous button.

Example

{MediaPrev} select previous track.

Media Select

Press media select button

Example

{MediaSelect} select media.

Media Stop

Press media stop button.

Example

{MediaStop} stop media playback.

Volume Down

Press volume down button.

Example

{VolDn} decrease media playback volume.

Volume Mute

Press volume mute button.

Example

{Mute} mute media playback.

Volume Up

Press volume up button.

Example

`{VolUp}` increase media playback volume.

Mouse Left Click

Click left mouse button.

Example

`{MouseLeft}` clicks left mouse button at current cursor location.

Mouse Left Double Click

Double click left mouse button.

Example

`{MouseDbLeft}` double click left mouse button at current cursor location.

Mouse Move

Move mouse cursor to specific x,y screen location.

Example

`{MouseMove 164,159}` move the mouse cursor to 164,159.

Mouse Move Relative

Move mouse cursor relative to current location.

Example

`{MouseMoveRel 10,5}` move mouse cursor 10 pixels to the right and 5 down.

Mouse Right Click

Click right mouse button.

Example

`{MouseRight}` clicks right mouse button at current cursor location.

Mouse Right Double Click

Double click right mouse button.

Example

`{MouseDbRight}` double click right mouse button at current cursor location.

Mouse Select

Select an area on the screen using the mouse cursor.

Example

`{MouseSelect 10,10,30,30}` select a rectangle on the screen between 10,10 and 30,30.

Mouse Wheel

Scroll the mouse wheel.

Example

`{MouseWheel 3}` scroll the mouse wheel 3 clicks.

Variables

Variables can be used to store information. There are 99 available variables, {Var1} to {Var99}.

Set Variable

Sets the contents of a variable

Example

{Var1=world}Hello {Var1}. Types Hello world.

Variable Math

Adds, subtracts, divides, or multiplies variable contents.

Examples

{Var1=6}{Var2=3}{Var3={Var1}+{Var2}} Variable number 1 contains 9.

{Var1=12}{Var1={Var1}-1} Variable number 1 contains 11.

{Var17=10}{Var2=5}{Var42={Var17}/{Var2}} Variable number 42 contains 2.

{Var22=5}{Var22={Var22}*5} Variable number 22 contains 25.

Type Variable

Type the contents of the variable into the active window.

Example

{Var1=5}Variable number 1 contains {Var1} Types Variable number 1 contains 5.

Variable from Clipboard

Copies the (text) contents of the clipboard into the variable.

Example

{Ctrl c}{Var1 GetClip}{run notepad.exe}{Var1} copies selected text to the clipboard, opens notepad, and types it.

Variable to Clipboard

Copies the contents of the variable to the clipboard.

Example

{Var1=Hello World!}{Var1 SetClip} sets the clipboard to Hello World!

Variable from DateTime

Sets the variable to the current date and/or time in the specified format.

Example

{Var1 DateTime,MM/dd/yyyy} sets variable number 1 to 12/1/2021

Variable from user input

Opens an input dialog and sets the variable to the user's response.

Example

{Var1=?What is your name|Paul} shows a dialog asking your name with a default answer of Paul.

Date and Time formatting Options

| | | |
|------|--|-------------------------------|
| d | Short Date | 8/4/2020 |
| D | Long Date | 8-Apr-20 |
| t | Short Time | 21:08 |
| T | Long Time | 21:08:59 |
| f | Full date and time | 4/8/2020 21:08 |
| F | Full date and time (long) | 4/8/2020 21:08 |
| g | Default date and time | 8/4/2020 21:08 |
| G | Default date and time (long) | 8/4/2020 21:08 |
| M | Day / Month | 8-Apr |
| r | RFC1123 date | Sun, 08 Apr 2020 21:08:59 GMT |
| s | Sortable date/time | 2020-04-08T21:08:59 |
| u | Universal time, local time zone | 2020-04-08 21:08:59Z |
| Y | Month / Year | Apr-07 |
| dd | Day | 8 |
| ddd | Short Day Name | Sun |
| dddd | Full Day Name | Sunday |
| hh | 2 digit hour | 9 |
| HH | 2 digit hour (24 hour) | 21 |
| mm | 2 digit minute | 8 |
| MM | Month | 4 |
| MMM | Short Month name | Apr |
| MMMM | Month name | April |
| ss | seconds | 59 |
| fff | milliseconds | 120 |
| FFF | milliseconds without trailing zero | 12 |
| tt | AM/PM | PM |
| yy | 2 digit year | 20 |
| yyyy | 4 digit year | 2020 |
| : | Hours, minutes, seconds separator, e.g. {0:hh:mm:ss} | 9:08:59 |
| / | Year, month , day separator, e.g. {0:dd/MM/yyyy} | 8/4/2020 |
| . | milliseconds separator | |

Command Line

You can control Typeitin One from the command line.

Switch to group

TypeitinOne.exe GroupName will switch to the specified group.

Example

TypeitinOne.exe Examples will switch to the Examples group.

Activate a button

TypeitinOne.exe GroupName,ButtonName will activate a button.

Example

TypeitinOne.exe Examples,Notepad will activate the Notepad button in the Examples group.

TypeitinOne.exe "Examples,My Test" will activate the My Test button in the Examples group.

Exit TypeitinOne

TypeitinOne.exe /EXIT will exit TypeitinOne.